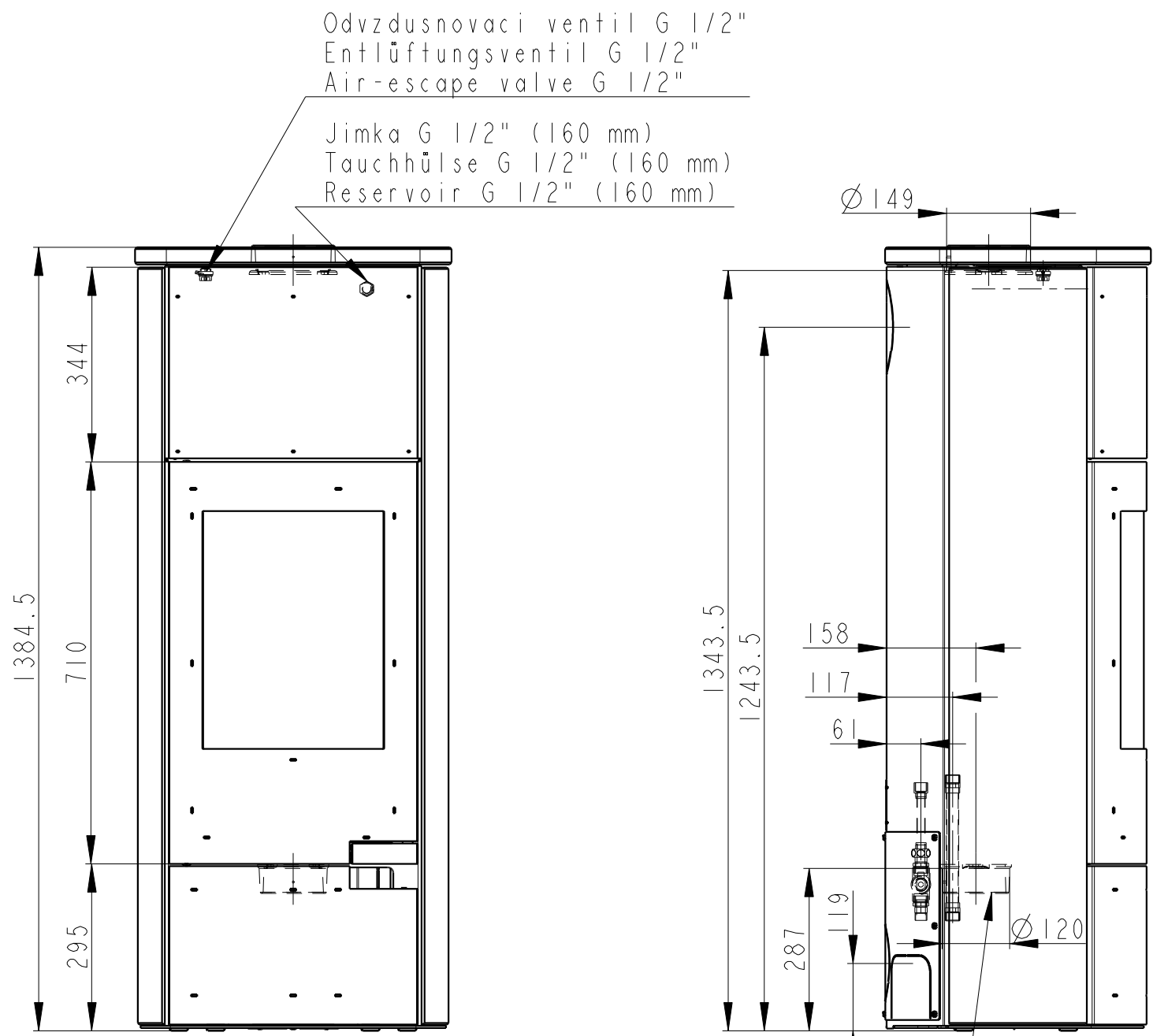


Rozmery v mm; Maße in mm

LUGO 02W SERPENTIN-097D

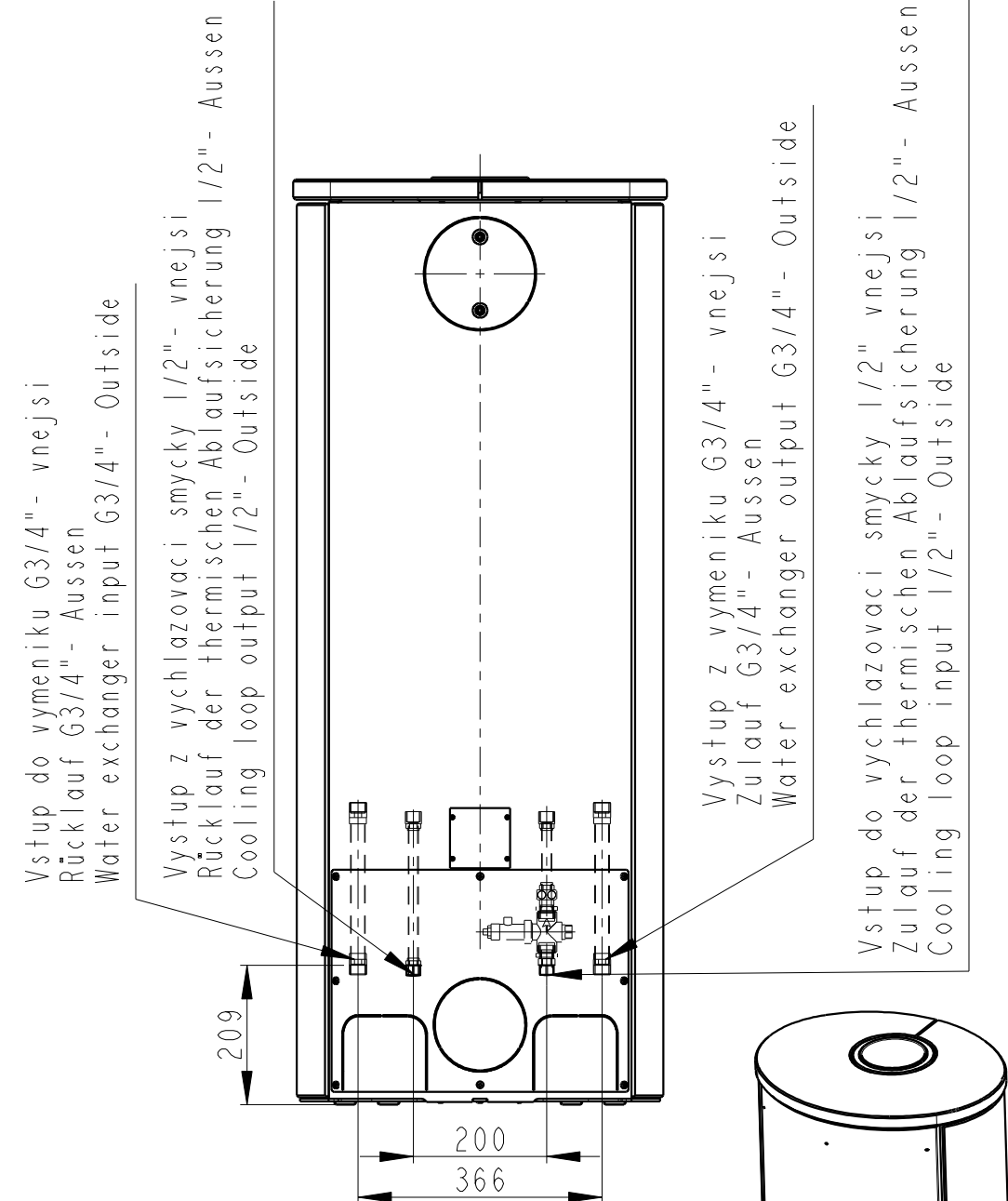
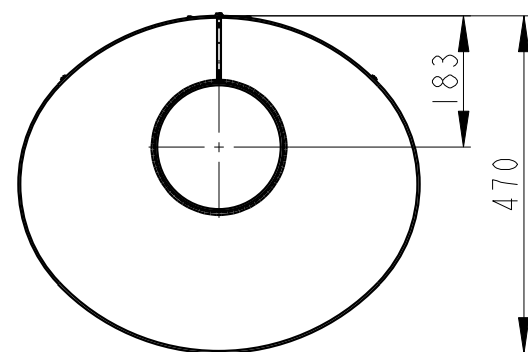
360 kg



Odvzdusnovaci ventil G 1/2"
Entlüftungsventil G 1/2"
Air-escape valve G 1/2"

Jimka G 1/2" (160 mm)
Tauchhülse G 1/2" (160 mm)
Reservoir G 1/2" (160 mm)

Centralni privod vzduchu Ø 120mm
Zentralluftzufuhr Ø 120mm
Central air inlet Ø 120mm



Vstup do vmeniku G3/4" - vnejsi
Rücklauf G3/4" - Aussen
Water exchanger input G3/4" - Outside

Vystup z vchlazovaci smycky 1/2" - vnejsi
Rücklauf der thermischen Ablaufsicherung 1/2" - Aussen
Cooling loop output 1/2" - Outside

Vystup z vmeniku G3/4" - vnejsi
Zulauf G3/4" - Aussen
Water exchanger output G3/4" - Outside

Vstup do vchlazovaci smycky 1/2" vnejsi
Zulauf der thermischen Ablaufsicherung 1/2" - Aussen
Cooling loop input 1/2" - Outside

Primarni vzduch a sekundarni vzduch.
Primärluft und Sekundärluft.
Primary and secondary air.

7:100